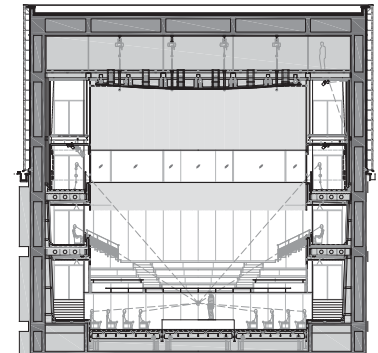


Acoustic Consultant:	Nagata Acoustics
Architect:	Isozaki + HuQuian Partners
Owner / User:	Shanghai Symphony Orchestra
Construction Cost:	RMB 630 Million

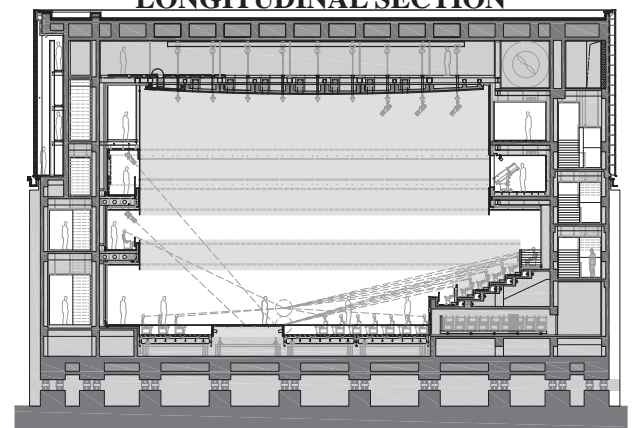
The Chamber Hall's acoustics and design prioritize use for chamber music concerts, as well as being equipped to also work well as a multipurpose venue. This hall has a basically rectangular shape in the traditional, "shoebox" style. The hall's main level has an entirely flat floor including both the stage and the audience seating. The main floor has an electric riser system dividing the entire area into 12 sections and enables numerous options for configuring the space.

The hall has two levels of balconies along the side walls and at one end of the hall. We designed these balconies and a fourth level directly above them to maximize their configurability and adaptability for multiple uses. The existence of the balconies can even be camouflaged from view when not in use. The lower (second floor) balcony has freestanding folding chairs for seating. The seats can be entirely removed to create an empty, flat-floored balcony. Likewise, the upper (third floor) balcony also has the same kind of adaptable seating and, in addition, can also be used as a technical balcony. To hide these balconies from view when not in use, large, wood grid panels attach to the front openings of the balconies and close off the openings. Also, the fourth floor space directly above the upper balcony has both walls and a floor with the same wood grids which provide acoustic transparency. Thus, the hall can be used in many creative and practical ways.

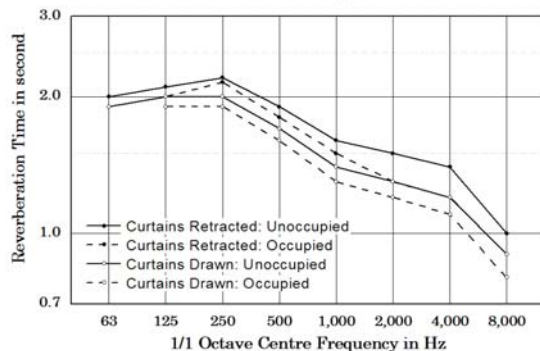
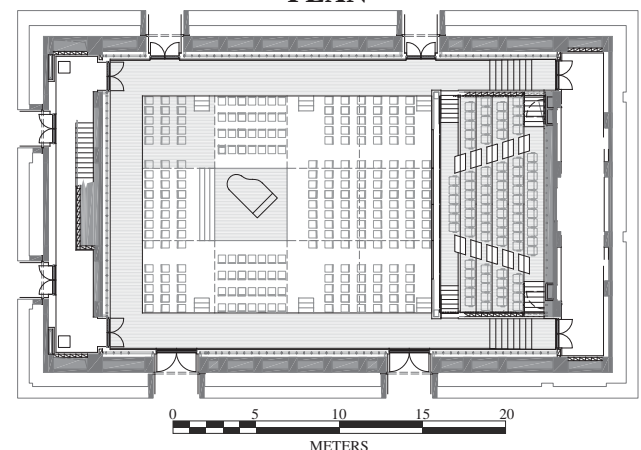
**TRANSVERSE SECTION**



**LONGITUDINAL SECTION**



**PLAN**



**BUILDING DETAILS AND ACOUSTICAL DATA**

Location 1380 Middle Fuxing Rd.  
Shanghai, China 200031

Small Hall:  
Seating Capacity: 400-600  
Room Volume: 6,500m<sup>3</sup>  
Reverberation Time (500Hz Octave Band)  
Curtains Retracted  
Unoccupied: 1.9 seconds  
Occupied: 1.7 seconds  
Curtains Deployed  
Unoccupied: 1.8 seconds  
Occupied: 1.6 seconds

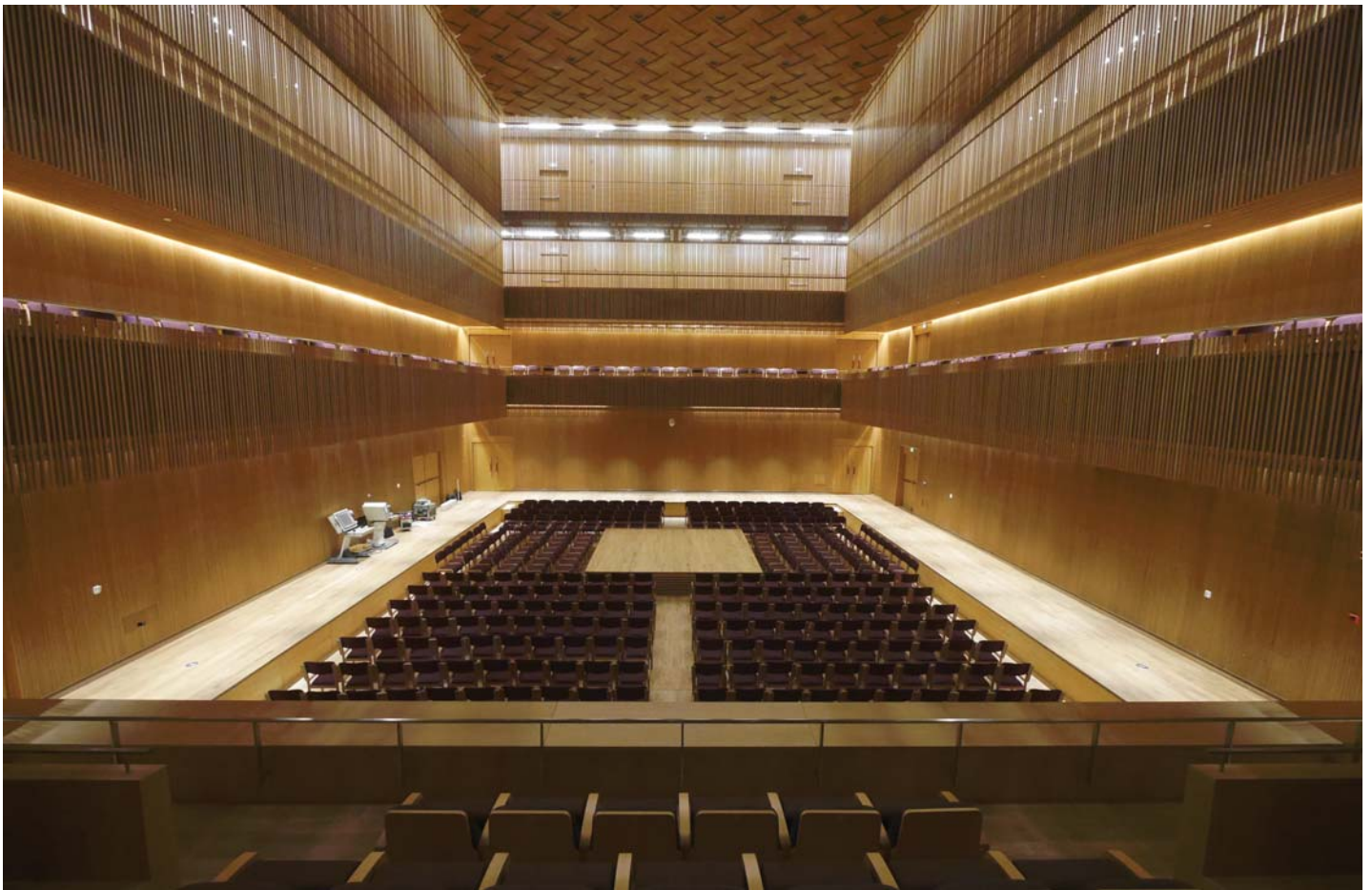
Finish Materials:  
Ceiling: Wood on Concrete  
Walls: Wood on Concrete  
Audience / Stage Floor: Japanese Hinoki with Air Space Below

Noise Level: < NC-15

# SHANGHAI SYMPHONY HALL - SMALL HALL

SHANGHAI, CHINA  
2014

NAGATA  
ACOUSTICS



Clockwise from Top:

- Hall Overview in Center-Stage state
- Hall and Lobby Facade
- Hall with Second Balcony Panels opened
- Detail of Adjustable second balcony enclosure

